

**PIC INSURANCE BROKERS COASTAL CLASSIC 2024**

**AUCKLAND TO RUSSELL YACHT RACE**

**Friday 25 October 2024 0930 hrs**

**The Organising Authority is The NZ Multihull Yacht Club**

**[www.coastalclassic.co.nz](http://www.coastalclassic.co.nz)**

**SAILING INSTRUCTIONS**

**AMENDMENT 1**

**1.0 RULES**

- 1.5 RRS41. Competitors may communicate with the race publicity team and to pre-agreed media. Competitors are reminded of their obligations under RRS41.

**IS CHANGED TO**

**1.0 RULES**

- 1.5 Rule 41. Competitors may communicate with the race publicity team and to pre-agreed media. Competitors may access free and/or subscription based weather forecasting and routing systems (like PredictWind) but no yacht shall receive routing information from a person ashore. Competitors are reminded of their obligations under RRS 41.

**5.0 THE FINISH**

- 5.1 The finishing line will be located approximately 600m west of Russell Wharf and will be in line with the wharf, which bears 078 degrees True. Two inflated buoys with white flashing strobe lights will mark either end of the finish line. One will be just off or attached to the stern of the finishing boat on the western end of the line and the other in towards Russell Wharf. Please ensure you pass between these two buoys.

See **Addendum A of these SI's** for an indicative diagram showing the layout of the finish line.

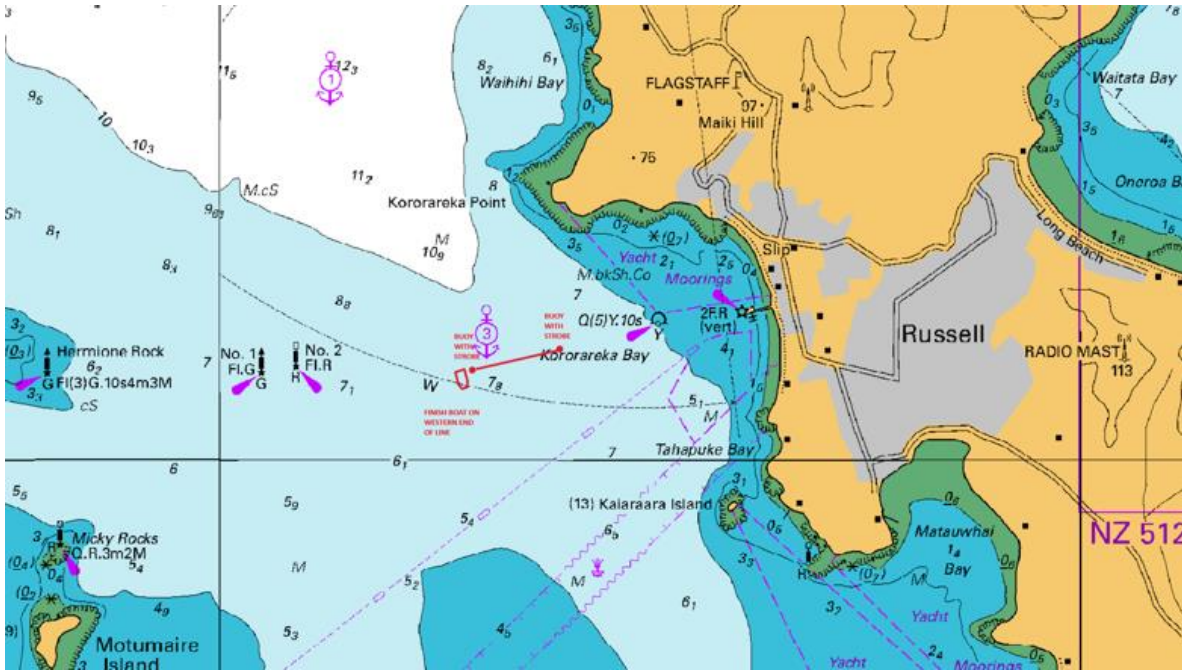
**IS CHANGED TO**

## 5.0 THE FINISH

- 5.1 The finishing line will be located approximately 600m west of Russell Wharf and will be in line with the wharf, which bears 078 degrees True. An inflated buoy with flashing strobe light (or other lighting) will mark the eastern end of the finish line and the finish boat will mark the Western end of the finish line. Please ensure you pass between the finish boat and the buoy. The line is relatively short in length. The finish boat is a 20m powercat.

See **Addendum A of these SI's** for an indicative diagram showing the layout of the finish line. **SEE NEXT PAGE**

# ADDENDUM A – RUSSEL FINISH MAP



# CHANGED TO ADDENDUM A – RUSSEL FINISH MAP

