



COASTAL CLASSIC 2024



PIC INSURANCE BROKERS COASTAL CLASSIC 2024

AUCKLAND TO RUSSELL YACHT RACE

Friday 25 October 2024 0930 hrs

The Organising Authority is The NZ Multihull Yacht Club

www.coastalclassic.co.nz

SAILING INSTRUCTIONS

The notation '[NP]' in a rule of the sailing instructions (SIs) means that a boat may not protest another boat for breaking that rule. This changes RRS 60.1(a).

The notation '[DP]' in a rule of the sailing instructions (SIs) means that the penalty for a breach of the rule may, at the discretion of the protest committee, be less than disqualification.

1.0 RULES

- 1.1 1.1 The event is governed by the rules as defined in The Racing Rules of Sailing.
- 1.2 1.2 The Yachting New Zealand Safety Regulations 2021-2024, Part 2, Category 3 shall apply with the following modifications:
- a. Yachts are not required to carry a Life raft or dinghy. If a yacht does not have a life raft or dinghy onboard the crew **SHALL wear lifejackets at all times, unless** the designated skipper (Master) / person in charge of the yacht considers that conditions are such that there is no significant increase in the risk to safety to any person through not wearing a lifejacket, and expressly gives permission for lifejackets or tethers not to be worn.
 - b. If the wind is above 15 Knots and during the hours of darkness lifejackets and tethers **shall be worn above deck at all times on all boats**. If crew are not doing so it is deemed that the Skipper has given express permission not to wear them.
 - c. Multihulls are to comply with SR APPENDIX 2: Life rafts and grab bags; YNZ Safety Regulations 2021-2024, as they pertain to grab bags.
 - d. Notwithstanding 1.2 a) above solo entrants must wear a lifejacket at all times;

- e. Each yacht shall have at least one installed Marine VHF radio (55 channel VHF) and one hand held waterproof multichannel VHF radio;
 - f. Yachts shall have on board a registered 406 EPIRB or 406 PLB. Failure to do so automatically renders their existing safety certificate invalid;
 - g. The OA **recommends** that all yachts maintain a diligent “listening watch” of VHF channel 16 during the race.
- 1.3 The International Regulations for Preventing Collisions at Sea (ColRegs) between the hours of Official Sunset and Sunrise shall apply. The yachts entered in the accompanying Rally will also be sailing according to the ColRegs.
 - 1.4 Self-steering devices are permitted for two-handed and solo division entrants only.
 - 1.5 RRS 41. Competitors may communicate with the race publicity team and to pre-agreed media. Competitors are reminded of their obligations under RRS 41.
 - 1.6 RRS 52 shall not apply.
 - 1.7 A boat shall not discharge trash in the water
 - 1.8 All forms of navigational aids, GPS, Sat-Nav, weather facsimiles, radar etc are permitted. GPS and Sat-Nav should be regarded as navigational aids not navigational systems.
 - 1.9 We hold a permit giving special permission to sail through the Bay of Islands Mammal Sanctuary abiding by the rules of; any mammal encounters txt the finish boat on **021 0242 1830 or call VNF63** with your race number. Exemptions ends at **3pm Saturday 26 October** when standard regulations apply. Review no zone map and more details at <https://www.coastalclassic.co.nz/dolphins>.

2.0 THE COURSE

- 2.1 From the start off Devonport Wharf, leave Little Barrier, The Mokohinau Islands and The Poor Knights Reserve (including High Peak Rocks and Sugarloaf Reef) to Starboard, to the finish off Russell Wharf in the Bay of Islands.

3.0 THE START

- 3.1 The start area will be a transit from Devonport Wharf to Hobson Point as described in **Addendum A of these SI's**.
- 3.2 Races will be started using RRS 26 and as described in **Addendum A of these SI's**.
- 3.3 Divisions will start in the following order and the starting sequence will be as follows:

Time		Divisions	Flag
0925hrs	Warning Signal and flag	4, 5, 8, Solo	Blue
0930hrs	Start	4, 5, 8, Solo	
0940hrs	Warning Signal and flag	2,3	White
0945hrs	Start	2,3	
0955hrs	Warning Signal and flag	1(a), 1(b), 6, 7	Red
1000hrs	Start	1(a), 1(b), 6, 7	

The preparatory signal will be Flag "Z".

This changes RRS 26 with regard to the warning signal.

3.4 **Start Line:** Also described in **Addendum A of these SI's.**

The start line will be a transit between the SE corner of Devonport Public wharf and the western bluff on Hobson Point across the harbour. This is an approximate bearing of 339 deg True toward the Devonport public wharf.

The Royal New Zealand Yacht Squadron (RNZYS) Start Boat will be positioned approximately 1000m from the SE corner of Devonport on the start line. There will be two buoys laid to mark the length of the line. They are:

1. An orange buoy approx 15m off Devonport Wharf (Buoy "A");
2. An orange buoy 300m in an approximate SE direction off the start boat (Buoy "B").

Divisions 1(a), 1(b), 2, 3, 4 and 5 start between Buoy A and the Start Boat leaving the Start Boat to Starboard (this line is approx. 1000m long).

Divisions 6, 7, 8 and solo entrants start between the Start Boat and Buoy B (this line is approx 300m) leaving the Start Boat to Port.

All sound and visual signals will be made from the Start Boat.

Boats whose warning signal has not been made shall avoid the starting area as described in **Addendum A of these SI's.**

Pre-race Identification

All boats shall be at the start line between 0800 hrs and 0900 hrs and shall pass close to the Start Boat for identification as a starter and for safety reasons.

LATE ARRIVALS shall advise their intention to start on VHF Channel **17**. Please use the words *Coastal Classic* when calling.

Recalls

The start for all divisions will be under the Z flag rule. RRS 30.2. The 'Z' flag penalty zone is marked in **Addendum A of these SI's.**

3.5 **[DP][NP]** Boats whose warning signal has not been made shall avoid the starting area during the starting sequence for other races.

4.0 PREDICTWIND TRACKER

- 4.1 For safety reasons, increased interest in online viewing of the race and developing race organisation practice, **each entrant shall use the PredictWind GPS tracking service**. To use the service, you will need two smartphones (one as a back-up) that use either iOS8 and above or Android 6 and above operating system. The PredictWind GPS tracking service is being made available at no cost to each competitor.
- 4.2 Full instructions on how to install and use the app are found at <https://www.predictwind.com/tracker/>; Select yacht club: NZMYC; Race: Coastal Classic 2024. Select your division and manually enter your boat name. It is recommended that all competitors test the tracking functionality at least one month before the event and view the data at <http://forecast.predictwind.com/tracking/race/nzmyc> to ensure that the service is working on their phone. Any technical enquiries or issues, please email PredictWind at support@predictwind.com.
- 4.3 It is the crews' responsibility to test that the system works on their phones prior to the race. Each competitor is expected to check their tracker is turned on and check battery levels are satisfactory at the start and each radio schedule. Only one phone should be used to send tracking data at any time. Failure to use the tracker for the entire race may result, at the sole discretion of the race committee, **a 20 minute time penalty** for the yacht not sending the tracking data and also render an entry ineligible for the spot prizes.

5.0 THE FINISH

- 5.1 The finishing line will be located approximately 600m west of Russell Wharf and will be in line with the wharf, which bears 078 degrees True. Two inflated buoys with white flashing strobe lights will mark either end of the finish line. One will be just off or attached to the stern of the finishing boat on the western end of the line and the other in towards Russell Wharf. Please ensure you pass between these two buoys.

See **Addendum A of these SI's** for a indicative diagram showing the layout of the finish line.
- 5.2 It is the responsibility of each boat to ensure it is properly identified. Please shine a torch on the sail number as you approach and cross the finish line if in darkness.
- 5.3 Please note finish boat communications on VHF Channel 63.

6.0 TIME LIMITS AND TARGET TIMES

- 6.1 The time limit: Racing will cease at 1400 hrs on 26 October 2024. Any boat not reaching the finishing line by this time will be entitled to radio in their position. To enable processing of this information you are to photograph your GPS position and send the photo together with the boat name by Text Picture message to 021 0242 1830 and you will be awarded a finish place. Any boat finishing in this manner will not be eligible for handicap prizes but will be eligible for separate prizes.

7.0 RACE HEADQUARTERS, RUSSELL

- 7.1 The Race Headquarters will be situated in the offices of Ray White, next to the Nauti Penguin, 19 York Street, Russell. Results will be available.

8.0 PROTESTS AND REQUESTS FOR REDRESS

- 8.1 Immediately after finishing a boat intending to protest shall, in addition to the requirements of RRS Rule 61.1, inform the Race Committee at Race Headquarters in Russell, or the finish team on the finish boat, of its intention to protest and the identity of the boat(s) protested against. The protesting boat must receive an acknowledgment from the Race Committee.
- 8.2 Protest forms will be available at the Race Headquarters and the completed form must be delivered to Race Headquarters within 90 minutes of finishing, accompanied by a fee of \$50.00.
- 8.3 Competitors involved in any protest will be contacted by the Organising Authority as soon as possible.
- 8.4 Any protests will be heard the week after the race, competitors will be advised of timing
- 8.5 Any boat being protested by the Race Committee will be contacted at the finish under Rule 61.1(b).
- 8.6 A request for redress based on a protest committee decision shall be submitted no later than 30 minutes after receiving the decision. This changes Rule 62.2.

9.0 [DP][NP]WITHDRAWING FROM THE RACE

- 9.1 It is important you let us know if you decide not to start, or withdraw from the race once started. If you withdraw before the race date, please let the organisers know by calling or texting 021 0242 1830 and emailing ccinfo@coastalclassic.co.nz.
- 9.2 Any boat withdrawing from the race on race day and BEFORE the start shall notify NZMYC race officials by calling on VHF Channel 17 or calling Coastguard on VHF Channel 64 or phone *500 or phone 021 0242 1830.

Boats withdrawing from the race AFTER the start must notify race officials as follows:

Inner harbour: Coastguard on Channel 64 or cell phone *500

Outer gulf to Tutukaka: Coastguard on Channel 60 or cell phone *500

Thereafter: Coastguard on Channel 04 or cell phone *500

10.0 EQUIPMENT AND MEASUREMENT CHECKS

- 10.1 Safety inspections may be carried out before starting or at the completion of the race. Any boat found to be in contravention of the requirements of 1.2 shall be subject to protest from the Race Committee.
- 10.2 Skippers must carry the boat's YNZ Category 3 safety certificate (or higher) onboard and present it on demand. The certificate must carry an expiry date no earlier than midnight on Sunday 27 October 2024.

- 10.3 If an overseas vessel is entering and holds a current safety certificate from its national authority of a standard commensurate with or better than YNZ Category 3, then it shall be permitted to enter with that certificate instead of a YNZ Category 3 certificate, subject to approval of the OA. The certificate in all cases must carry an expiry date no earlier than midnight on Sunday 27 October 2024.

11.0 CODE OF CONDUCT

- 11.1 [DP] Boats shall display advertising supplied by the organising authority.
- 11.2 [DP] Competitors and support persons shall comply with reasonable requests from race officials.

12.0 RADIO COMMUNICATION

- 12.1 All boats MUST report in THREE times during the race as follows:

- 1) At **Flat Rock** – Coastguard on Channel 60;
- 2) When passing **Sail Rock** – Coastguard on Channel 60; or Channel 05
- 3) As soon as practicable after **Cape Brett** – Coastguard on Channel 04.

When calling in state:

Coastguard Radio, Coastguard Radio

This is Coastal Classic,

Boat name, sail number

Boat name, sail number

Location, i.e. Flat Rock, Sail Rock or Cape Brett. **OVER**

Any boat failing to call-in will be ineligible for the spot prizes.

- 12.2 For Urgency and Distress at any time:

VHF Channel 16 or dial 111 and ask for Police

- 12.3 For Coastguard Assistance (non-urgent) local Coastguard VHF Channel as in Rule 9.2 or *500 from a mobile phone.

- 12.4 Finish Boat VHF Channel 63.

- 12.5 Water Taxis in Russell Channel 8.

13.0 SAFETY

- 13.1 All those taking part in the race do so entirely at their own risk and their own responsibility

Responsibility of Person in Charge

- 13.2 The safety of a yacht and her crew is the sole and inescapable responsibility of the skipper who must do their best to ensure that the yacht is fully found, thoroughly seaworthy and manned by an experienced crew who have undergone appropriate training and are physically fit to face bad weather. The

skipper must be satisfied as to the soundness of hull, spars, rigging, sails and all gear. The skipper must ensure that all safety equipment is properly maintained and stowed and that the crew knows where it is kept and how it is to be used.

- 13.3 Decision to race – The responsibility for a yacht’s decision to participate in a race or to continue racing is theirs alone – RRS Fundamental Rule 4.

14.0 DISCLAIMER OF LIABILITY

14.1 Competitors participate in the race entirely at their own risk. See RRS 3, Decision to Race. The organising authority will not accept any liability for material damage or personal injury or death sustained in conjunction with or prior to, during, or after the race.

14.2 Competitors accept that sailing is by its nature an unpredictable sport and therefore inherently involves an element of risk. By taking part in the event, each competitor agrees and acknowledges that:

- They are aware of the inherent element of risk involved in the sport and accept responsibility for the exposure of themselves and their boat to such inherent risk whilst taking part in the event;
- They are responsible for the safety of themselves, their boat and their other property whether afloat or ashore;
- They accept responsibility for any injury, damage or loss to the extent caused by their own actions or omission;
- Their boat is in good order, equipped to sail in the event and they are fit to participate;
- The provision of a race management team, patrol boats and other officials and volunteers by the event organiser does not relieve competitors of their own responsibilities;

15.0 POSTPONEMENT

15.1 The organisers reserve the right to postpone the start due to adverse conditions. In the event they do so, Notice of Postponement will be posted on a noticeboard in the foyer inside the RNZYS and on-line at www.coastalclassic.co.nz, by 7am on 25 October 2024. The Notice will indicate where possible the expected time to restart.

16.0 PRIZES

16.1 The Prizegiving will be held at the Nauti Penguin, Russell at **1900 hrs** on Saturday 26 October 2024.

16.2 Prizes will be awarded as follows:

First Boat to Russell: Overall line honours

First Monohull on PHRF (Passage):

Overall PHRF winner (all divisions combined)

First Multihull Handicap:

Overall (both Multihull Divisions combined)

Divisions 1(a), 1(b), 2, 3, 4, 5 and 8:

Line honours

1st, 2nd & 3rd on PHRF (Passage) handicap

Division 6-7:

Line honours

1st, 2nd & 3rd on NZMYC handicap in each division

IRC:

1st, 2nd & 3rd on IRC handicap, subject to number of entries

Classic, Women's, Two Handed, solo division:

1st, 2nd & 3rd on PHRF (Passage)handicap, subject to number of entries in each Division

Multihull Cruising:

Line honours

1st, 2nd & 3rd and NZMYC handicap, subject to number of entries

Classes:

First on line

16.3 The Organising Authority reserves the right to delete any division not attaining the required entries as required by NOR. 7.8 (note).

16.4 To obtain a prize a representative of the sailing crew or nominee must be present at the prizegiving. Prizes will not be delivered if a representative is not present at the prizegiving.

17.0 RUSSELL PUBLIC PLACES LIQUOR BAN

17.1 The Far North District Council Public Places Liquor Control Bylaw 2003 prohibits the consumption or possession of liquor **in all public places** at all times. This includes Russell Wharf and all areas in the surrounds of the Russell Waterfront. Please ensure compliance.

18.0 WESTHAVEN MARINA PARKING OVER LABOUR WEEKEND

18.1 As parking is at a premium over Labour Weekend carpooling would be appreciated.

19.0 EVENTS

Thursday 24 October 2024:

Registration and collection of race packs from RNZYS 1700-1830 hrs

Compulsory Skippers briefing RNZYS 1830 hrs.

Friday 25 October 2024:

The Nauti Penguin will be open to welcome crews arriving and for supporters until late.

Depending on the number of boats yet to arrive, the Nauti Penguin will be serving hot food from midnight till 6.am. Please check Facebook and/or the PIC Coastal Classic app to see any updates.

Saturday 26 October 2024:

Prizegiving will be held at 1900 hrs at the Nauti Penguin. It will be followed by the PIC Coastal Classic After Party, which will start after the conclusion of the prizegiving. Live music, food and party.

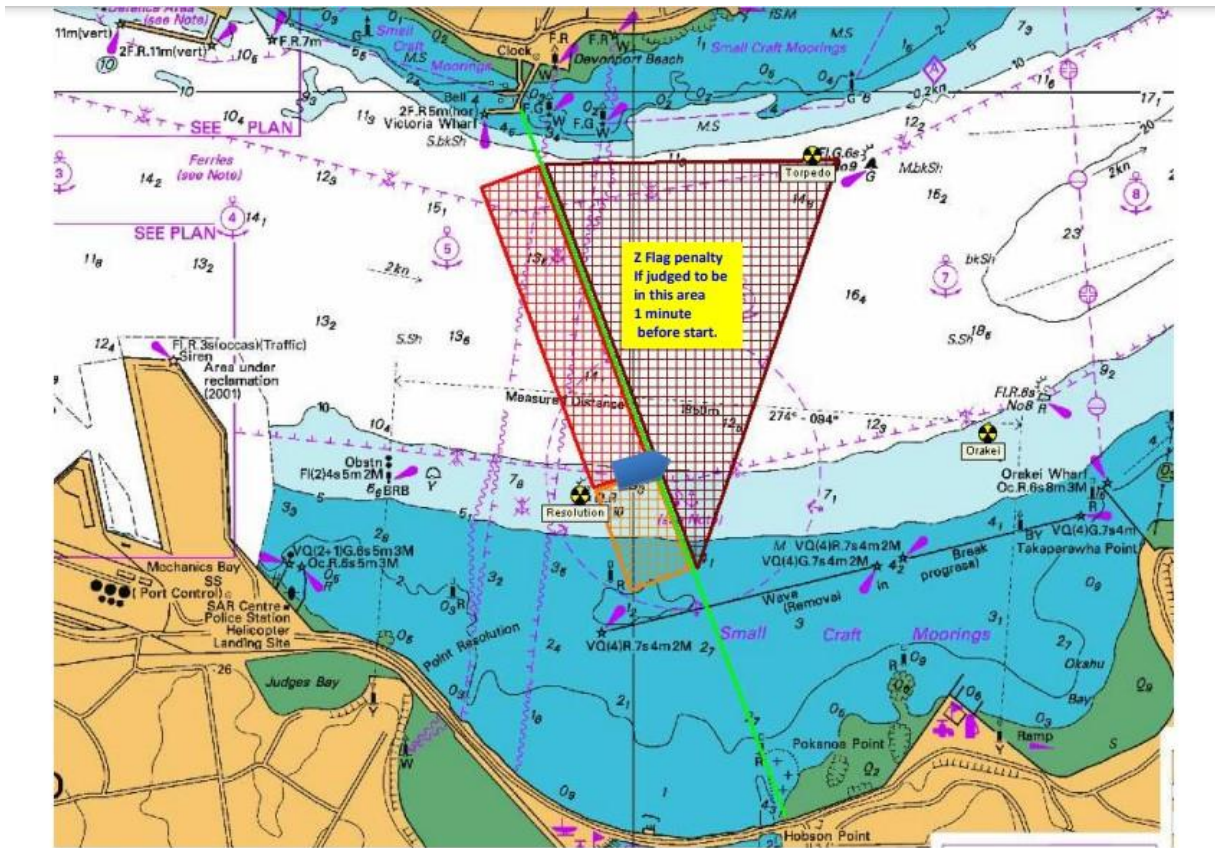
20.0 WATER TAXI

A water taxi service to take all entrants from their boats to Russell Wharf will operate from the first boat's arrival in Russell until 1000 hrs Sunday 27 October 2024. Water taxis operate in Russell on Channel 8.

RACE & EVENT MANAGEMENT:

Event Director:	Fran Holland	<u>ccinfo@coastalclassic.co.nz</u> 029 239 5449
Race Director:	Megan Kensington	<u>ccinfo@coastalclassic.co.nz</u> 021 306 180
Media:	Zoe Hawkins	<u>media@coastalclassic.co.nz</u> 021 871 301
Finish Boat:	Greg Roake	021 0242 1830

ADDENDUM A – AUCKLAND START MAP



ADDENDUM A - RUSSELL FINISH MAP

